

# LAND FOR LEASE

Commercial Brokers Association

20700 44th Ave W, Ste 550 Lynnwood, WA 98036 | 425-820-3348



## LOT 7 - PARCEL 117510039

Chapel Hill Blvd, Suite Lot 7 - Ground Lease  
Pasco, WA 99301

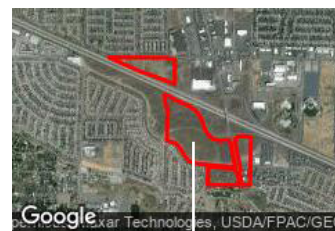
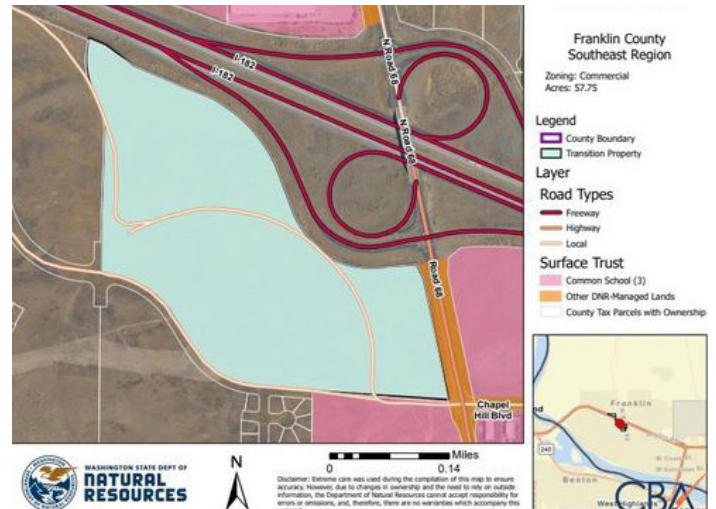
### LISTING DETAILS

<b>Suite</b>	Lot 7 - Ground Lease
<b>Sublease</b>	No
<b>Total Available Space</b>	57.75 Acres 2,515,590 SF
<b>Min Div/Max Contig</b>	Not present/2,515,590 SF
<b>Asking Rate</b>	\$0.03 Monthly/SF
<b>Monthly Rate</b>	\$83,853
<b>Lease Type</b>	Other
<b>Expenses</b>	-
<b>Available Date</b>	Now
<b>Date Listed</b>	8/25/2021
<b>Last Modified</b>	8/01/2022
<b>Listing ID</b>	10981548
<b>Parking Spaces</b>	-
<b>Electrical</b>	-
<b>Water</b>	-
<b>Sanitary Sewer</b>	-

### DESCRIPTION

Ground leasing a portion of the site is an option.

**Tax ID #** 117510039



Lot 7 - Parcel 117510039



WASHINGTON STATE DEPARTMENT OF  
**NATURAL RESOURCES**

### CONTACT

**Gary Martindale**

Cell 564-201-0413

gary.martindale@dnr.wa.gov

## LOT 7 - PARCEL 117510039

Chapel Hill Blvd, Suite Lot 7 - Ground Lease  
Pasco, WA 99301

### PROPERTY DETAILS

<b>Zoning</b>	Commercial/Off.
<b>Parcels</b>	117510039
<b>Submarket</b>	-
<b>County</b>	Franklin
<b>Water</b>	-
<b>Natural Gas</b>	-
<b>Sanitary Sewer</b>	-

### OWNER CONTACT INFORMATION

**Washington State Department of Natural Resources**  
Natural Resources Building  
MS 47000  
1111 Washington St. SE, Olympia, WA 98504  
360-902-1000  
dnr.wa.gov



### PROXIMITY TO MAJOR CITIES

<b>Spokane</b>	140 Miles
<b>Seattle</b>	209 Miles
<b>Vancouver</b>	223 Miles
<b>Olympia</b>	254 Miles

### CONTACT

**Gary Martindale**  
Cell 564-201-0413  
gary.martindale@dnr.wa.gov