

LAND FOR LEASE

Commercial Brokers Association

20700 44th Ave W, Ste 550 Lynnwood, WA 98036 | 425-820-3348



I-82 & HWY 224, GROUND LEASE

I-82 & Hwy 224, Suite Ground Lease
Benton City, WA 99320

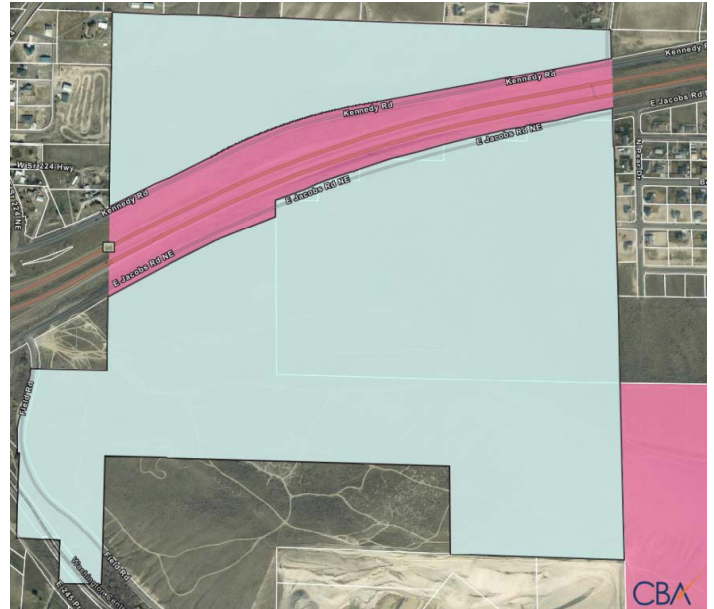
LISTING DETAILS

Suite	Ground Lease
Sublease	No
Total Available Space	224.3 Acres 9,770,508 SF
Min Div/Max Contig	9,770,508 SF
Asking Rate	\$0.03 Monthly/SF
Monthly Rate	\$325,684
Lease Type	Other
Expenses	-
Divisible	9770508
Available Date	Now
Date Listed	8/25/2021
Last Modified	9/17/2021
Listing ID	10981546
Parking Spaces	-
Electrical	-
Water	-
Sanitary Sewer	-

DESCRIPTION

Ground leasing a portion of the site is an option.

Tax ID # 120971000002000



WASHINGTON STATE DEPARTMENT OF
NATURAL RESOURCES

CONTACT

Gary Martindale

Cell 564-201-0413

gary.martindale@dnr.wa.gov

I-82 & HWY 224, GROUND LEASE

I-82 & Hwy 224, Suite Ground Lease
Benton City, WA 99320

LOCATION DETAILS

Address	0 I-82 & Hwy 224 Benton City, WA 99320
Zoning	Light Industrial
Submarket	CBA Benton County
County	Benton
Parcels	120971000002000
Name	Benton City Land

BUILDING DETAILS

Sub Type	-
Land Size	224.3 Acres/9,770,508 SF
Electrical	-
Water	-
Sanitary Sewer	-
Security System	No

OWNER CONTACT INFORMATION

Washington State Department of Natural Resources
Natural Resources Building
MS 47000
1111 Washington St. SE, Olympia, WA 98504
360-902-1000
dnr.wa.gov



PROXIMITY TO MAJOR CITIES

Tri-Cities	48 Miles
Spokane	159 Miles
Seattle	186 Miles
Vancouver	193 Miles
Olympia	213 Miles